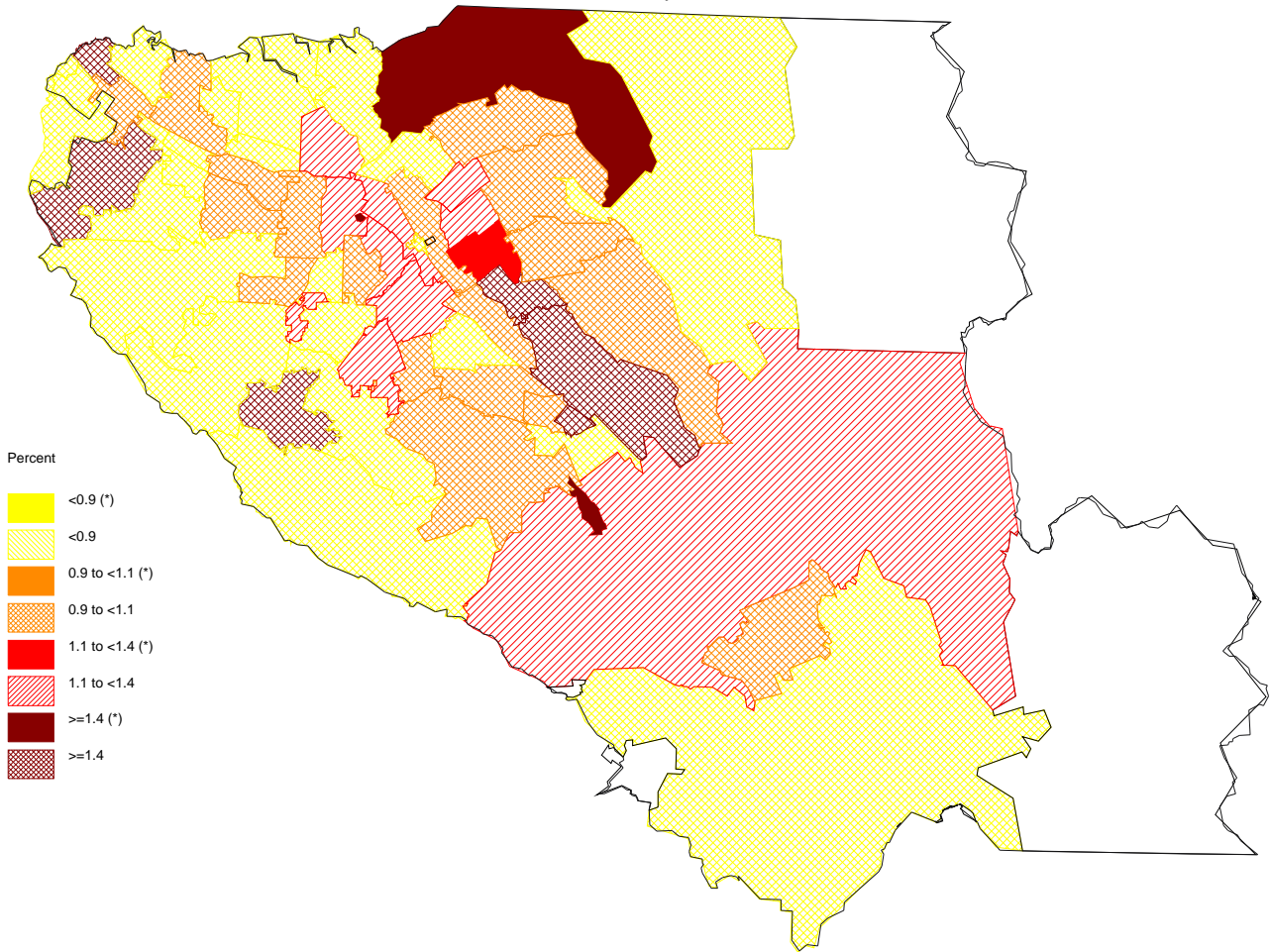


Percent of Very Low Birth Weight Infants  
Santa Clara County, 2005-2007



Percent

	<0.9 (*)
	<0.9
	0.9 to <1.1 (*)
	0.9 to <1.1
	1.1 to <1.4 (*)
	1.1 to <1.4
	>=1.4 (*)
	>=1.4

The star in parenthesis after the legend entry indicates a statistically significant percent compared to the Healthy People 2010 Objectives (alpha=0.01; two-tailed test). For white areas in the map, no data are available.