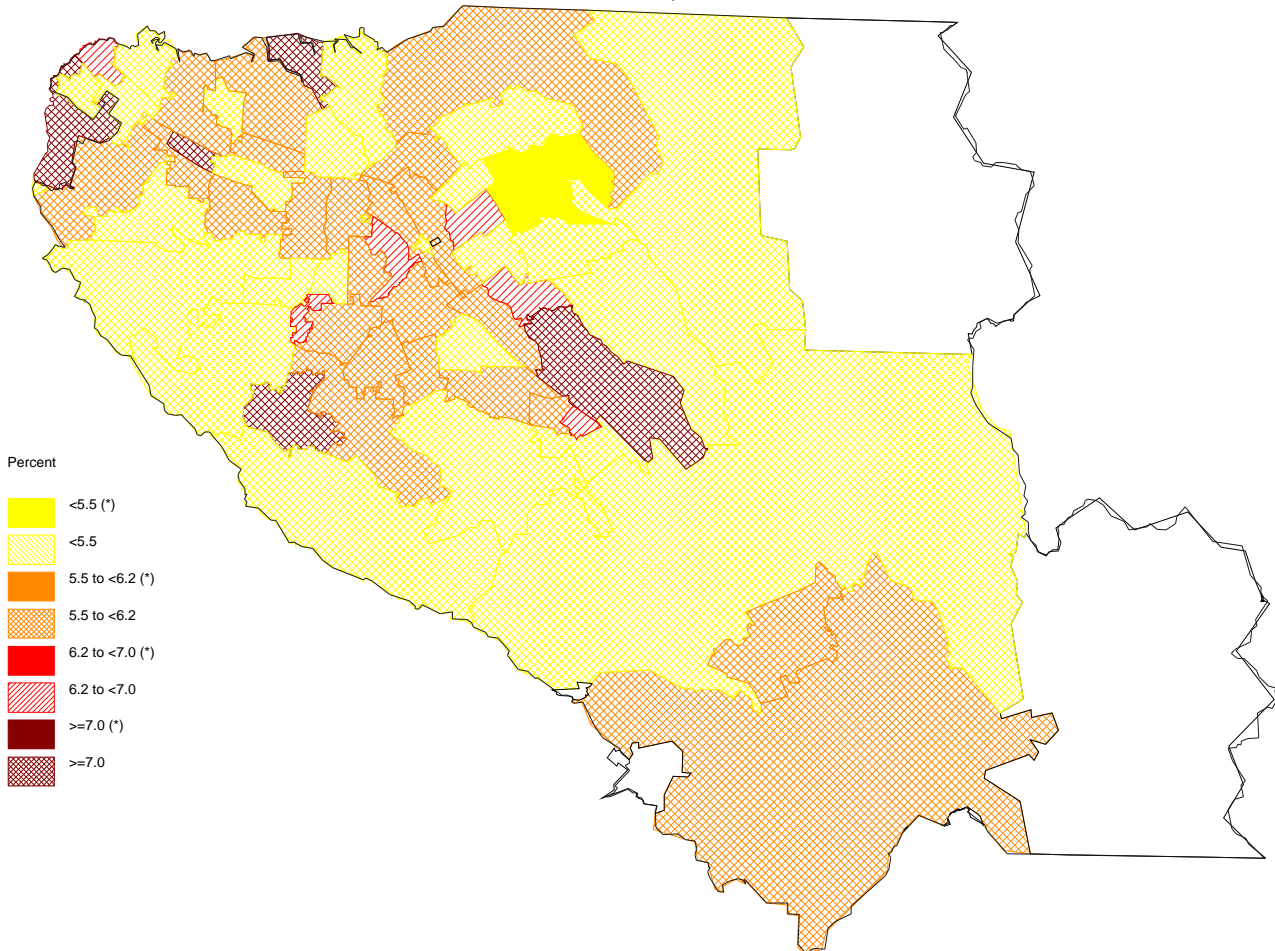


Percent of Newborns with Hospital Stay Longer than 5 Days Until Home Discharge  
 Santa Clara County, 2005-2007



Percent

- <5.5 (\*)
- <5.5
- 5.5 to <6.2 (\*)
- 5.5 to <6.2
- 6.2 to <7.0 (\*)
- 6.2 to <7.0
- >=7.0 (\*)
- >=7.0

The star in parenthesis after the legend entry indicates a statistically significant percent compared to the California average (alpha=0.01; two-tailed test).  
 For white areas in the map, no data are available.